



Communities
In Schools®

Georgia in
Marietta/Cobb County

IMPACT REPORT

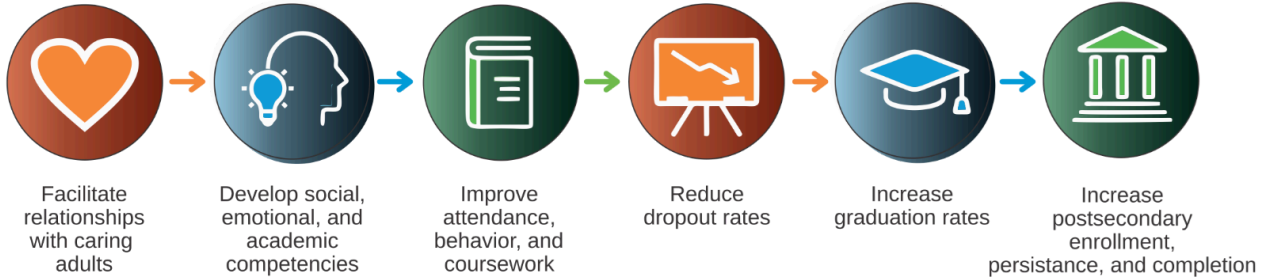
2024-2025



Who We Are

Communities In Schools (CIS®) of Georgia is part of the nation's largest and most effective drop-out prevention organization, working in schools and beyond the classroom to fuel potential, so every student can take charge of their story. At Communities In Schools, we surround students with a community of support, empowering them to stay in school and achieve in life.

How We Work



We improve student and school success by mitigating barriers that impede academic achievement. The CIS model includes wraparound services validated by a 5-year independent evaluation resulting in the strongest reduction in school dropout rates of any dropout prevention organization. CIS personnel provide some services directly, connect with partners to make others available, and refer to existing services. This coordination makes service delivery more effective and efficient, getting students the services they need without duplicating efforts.

WE BELIEVE EVERY CHILD DESERVES



We operate with a continuous improvement model of integrated students supports. Types of services that can be provided at CIS sites can include the following:

- Academic Assistance
- Attendance
- Basic Needs
- Behavioral Interventions
- Case Management
- Civic Engagement
- College and Career Preparation
- Enrichment & Motivation
- Family Engagement
- Life/Social Skills
- Physical Health
- Mental Health Referrals

Our Unique Model



CIS ORGANIZATIONS

Hire and train site coordinators, bring the CIS model to schools in need, and mobilize partners to provide resources.



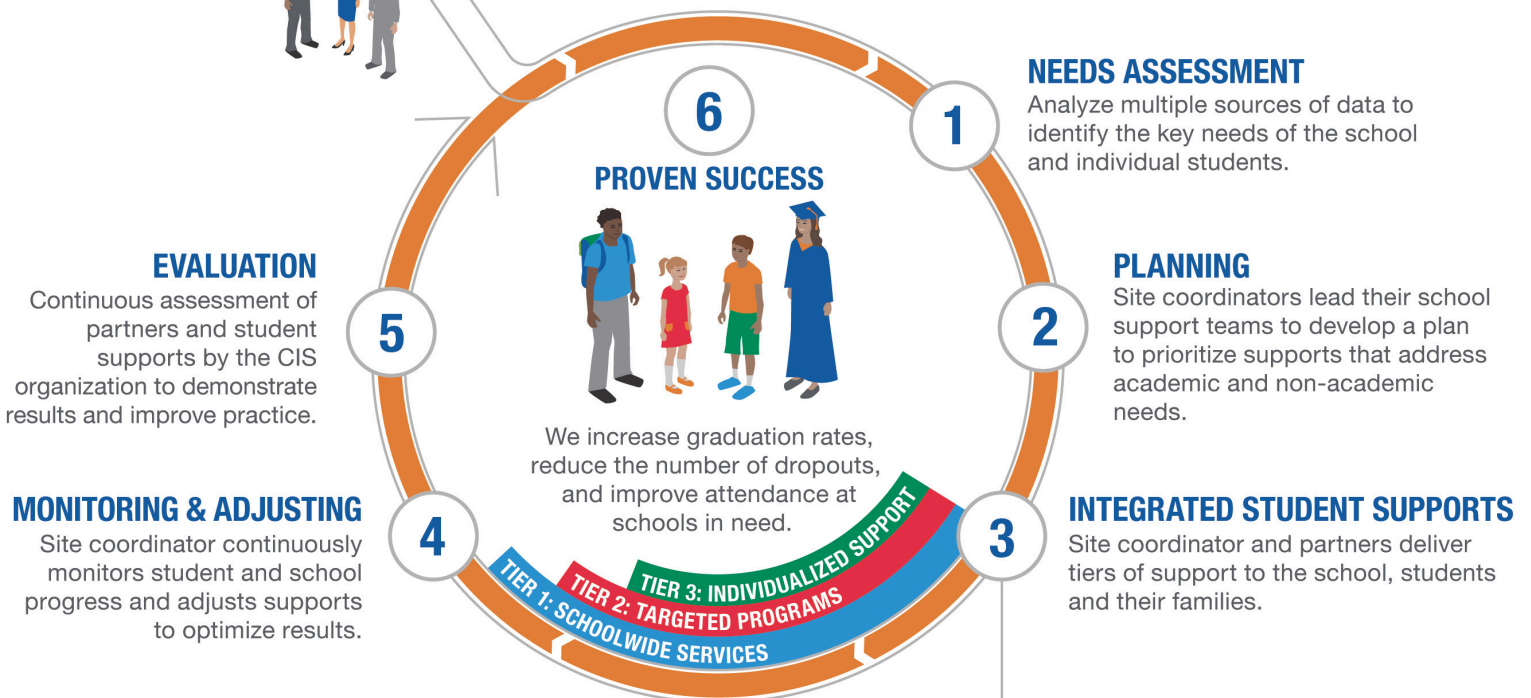
SITE COORDINATORS

Trained professionals who work with school administrators to assess needs, develop a plan and build a team to provide supports to schools and students.



COLLABORATIVE PARTNERS

Schools, businesses and community agencies all work together with site coordinators to deliver supports to students and families.



ACADEMIC ASSISTANCE



ATTENDANCE



BASIC NEEDS



BEHAVIORAL INTERVENTIONS



CIVIC ENGAGEMENT



COLLEGE & CAREER PREP



ENRICHMENT/MOTIVATION



FAMILY ENGAGEMENT



LIFE/SOCIAL SKILLS



PHYSICAL HEALTH



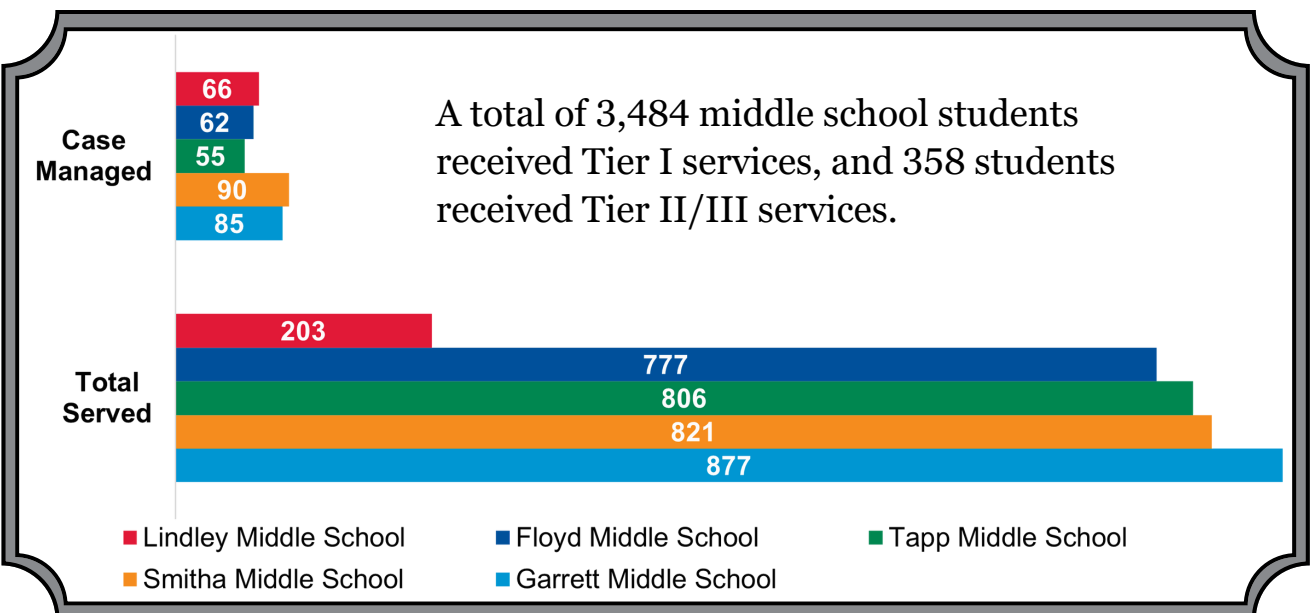
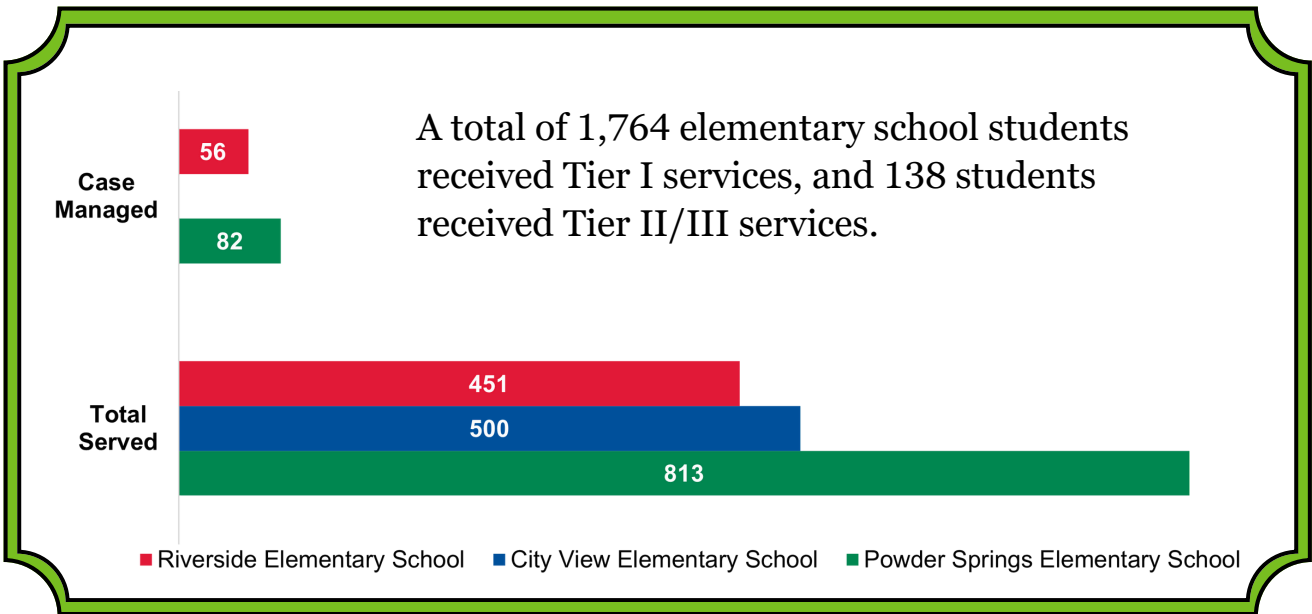
PROFESSIONAL MENTAL HEALTH

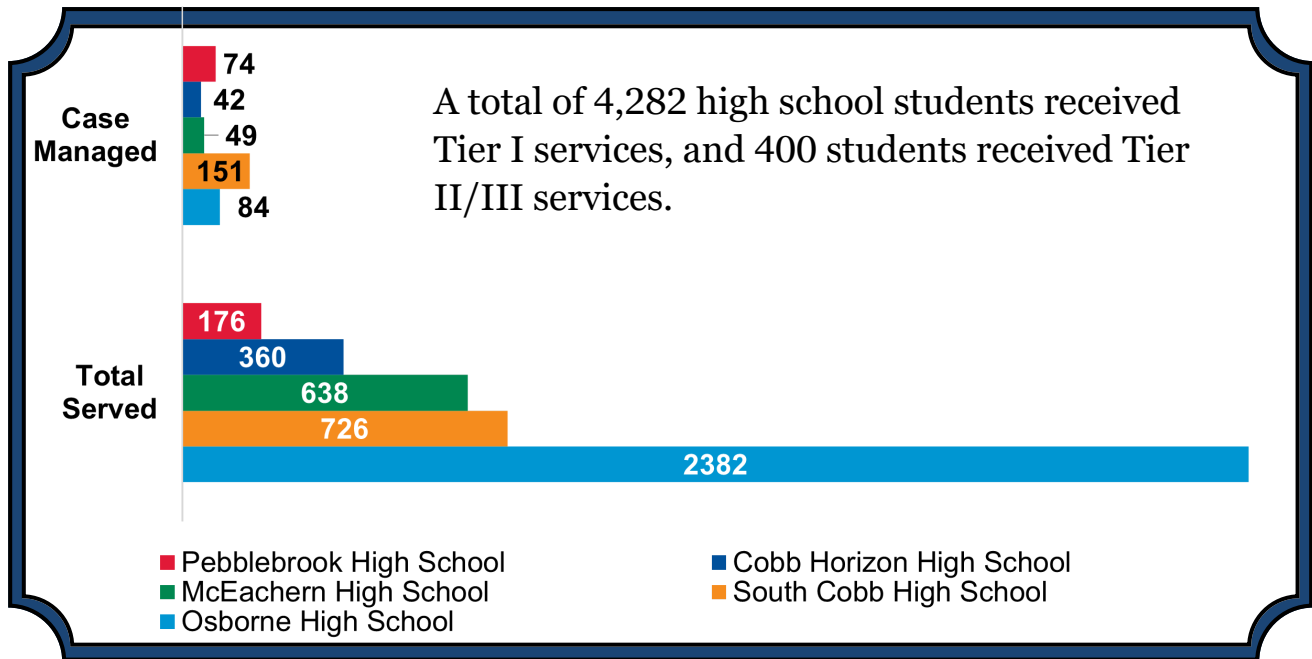
Students Served

CIS provides three tiers of support services - Tier I, Tier II and Tier III. Site coordinators can provide any combination of the support tiers of service within the sites they serve.

Tier I resources and supports include whole school services such as basic needs, events, and brief interventions in crisis situations. Targeted case-management is provided to students in need of ongoing support, either in a small group setting (Tier II) or one-on-one (Tier III) for individualized attention.

In 2025, a total of **9,530** Cobb County elementary, middle and high school students were served with Tier I services, and **896** students received Tier II/III services. The graphs below break down students served by school level.





Services to Case Managed Students

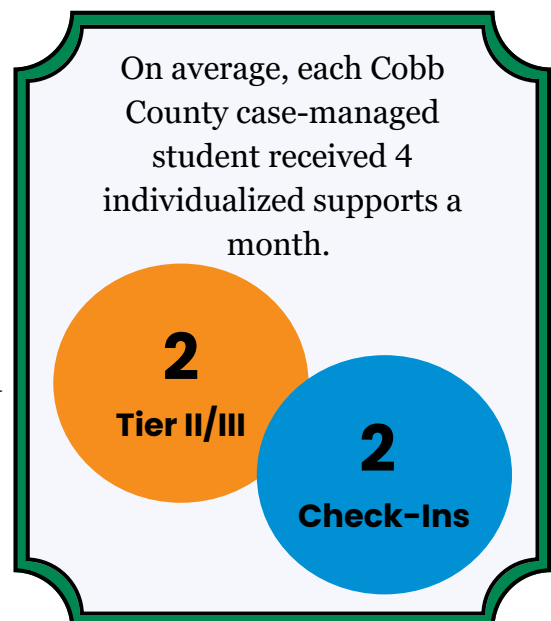
Needs assessments are conducted for every student referred to CIS for case management services, and an individualized support plan is created to address those needs. Students receive Tier II/III supports and regular check-ins with their site coordinator to monitor progress, address needs and provide guidance and encouragement.

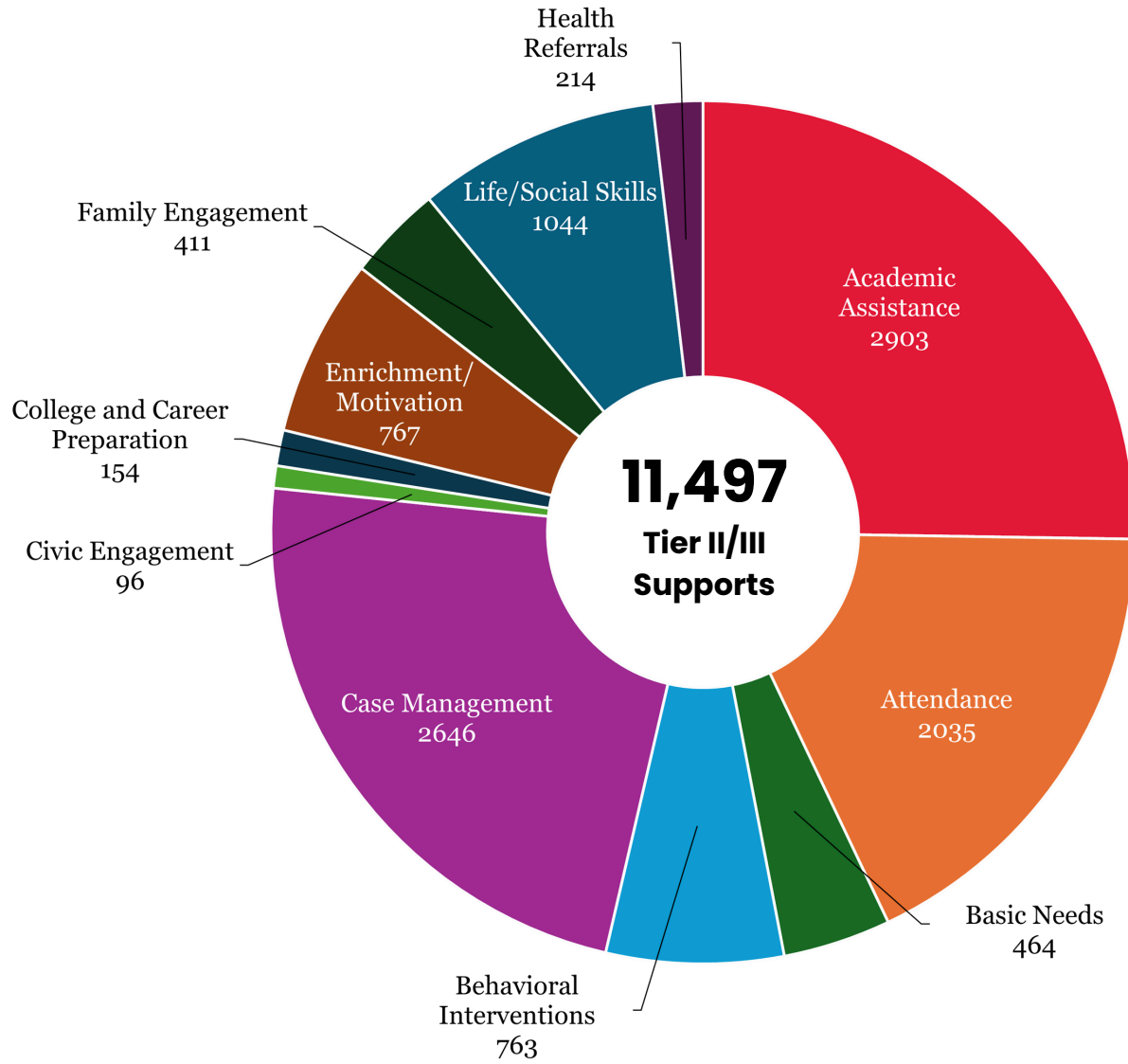
A total of 11,497 Tier II/III supports were provided to case-managed students in Cobb County. Academic assistance and attendance supports made up nearly 50% of the services.

Every single school offered tutoring or peer tutoring, totaling 276 sessions involving 216 caseload students. Credit recovery was provided to 37 students across three of the high schools.

Mentoring groups connecting young men with caring, male adults in the community and school staff spanned 336 supports across seven schools. Young girls groups met 64 times and focused on building and maintaining healthy relationships with peers.

The charts on the following page provide a breakdown of caseload student participation in individualized supports.





Case-Managed Student Participation in Tier II/III Services	Percent of Case Managed Students Participating by Category												
	PSES	RES	FMS	GMS	LMS	SMS	TMS	CHHS	MHS	OHS	PHS	SCHS	Total
	(n=82)	(n=56)	(n=62)	(n=85)	(n=66)	(n=90)	(n=55)	(n=42)	(n=49)	(n=84)	(n=74)	(n=151)	(n=896)
Case Management	99%	68%	10%	56%	94%	87%	100%	86%	71%	100%	100%	77%	81%
Academic Assistance	79%	79%	89%	25%	9%	97%	78%	-	76%	-	15%	97%	57%
Enrichment/Motivation	91%	14%	77%	53%	68%	14%	100%	-	37%	98%	1%	24%	48%
Life/Social Skills	95%	4%	89%	51%	74%	29%	98%	52%	-	17%	-	36%	44%
Attendance	70%	98%	40%	6%	-	29%	7%	12%	35%	7%	-	69%	34%
Behavioral Interventions	12%	82%	85%	36%	8%	82%	20%	-	41%	-	-	25%	32%
Basic Needs	9%	38%	61%	12%	14%	4%	38%	26%	2%	-	14%	97%	31%
Family Engagement	84%	91%	10%	4%	-	23%	84%	17%	-	-	3%	1%	23%
College/Career Prep	-	-	16%	1%	-	18%	-	21%	14%	36%	7%	-	12%
Civic Engagement	-	-	-	-	-	-	80%	-	33%	-	-	-	7%

School-wide Support Highlights

CIS Site Coordinators reached 57 percent of all students with school-wide activities. Below are some of the Tier I (school-wide) activities organized or contributed to by the site coordinators that reached the largest numbers of students.

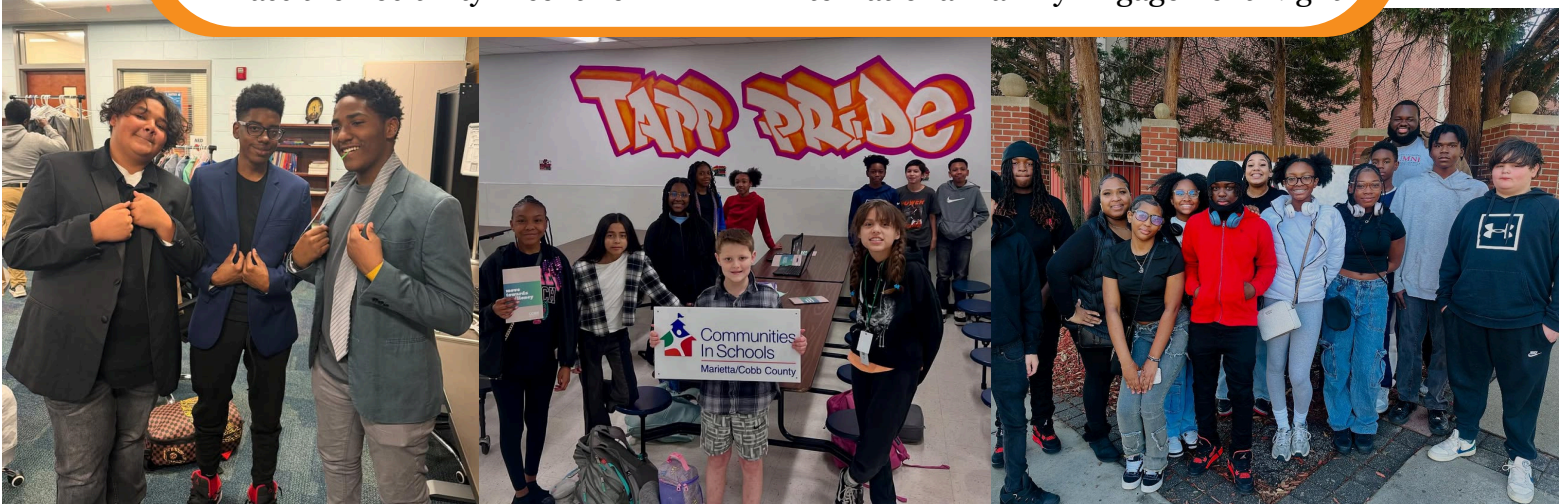
Elementary Schools

- Travel Trophies Attendance Incentive
- School-Wide House Party
- PSE Winter Fest
- W.I.G.S Night
- Perfect Attendance Incentives
- ROCK Cart Behavioral Incentives
- “Hello Bucket” Morning Bell Incentive



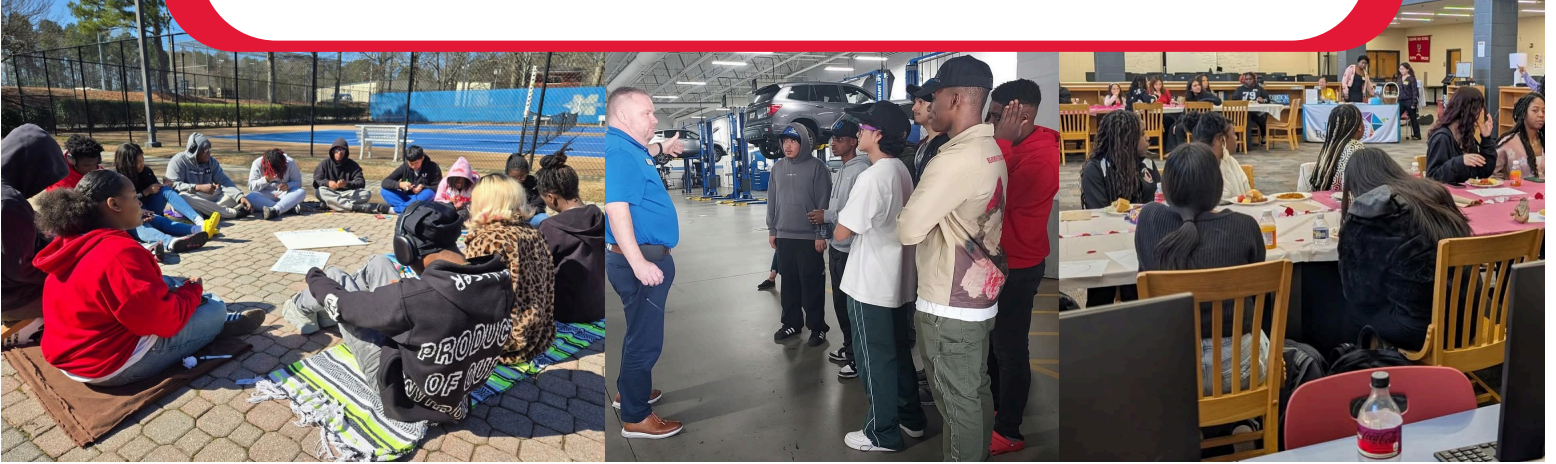
Middle Schools

- Perfect Attendance Challenge
- STEAM Day
- Reality U
- Cultural Heritage Celebrations
- Pass the Positivity Incentive
- Prom/Graduation Suit Fittings
- Pep Rally
- Kids-Care Community Service Project
- ISS/OSS Push-In
- International Family Engagement Night



High Schools

- College Fair
- Health Fair
- Fine Arts Night
- Honor Roll Drive-By
- Apply to College Day
- In Class On Task
- Career Exploration
- Guest Speakers
- SOAR and SOCIALIZE
- Parent Meet and Greet
- Reality U
- Galentine's Day
- Coat & Food Drive
- College Visits
- The Grub Club



Site coordinators distributed Basic Needs supports 847 times, including clothing, food, holiday assistance, hygiene products, school supplies and transportation. The following chart displays the duplicated number of students, parents, and community members/school staff who received one or more of these supports.

Duplicated Counts of Students, Parents and Others Served by Basic Needs	# of Supports	Students Served	Parents Served	Others Served
Powder Spring Elementary	16	51	5	4
Riverside Elementary	53	2231	28	4
Floyd Middle	8	56	-	-
Garrett Middle	16	45	-	-
Lindley Middle	12	170	1	-
Smitha Middle	42	546	153	27
Tapp Middle	194	1248	646	1249
Cobb Horizon High	54	155	138	-
McEachern High	3	103	-	-
Osborne High	428	740	40	16
Pebblebrook High	18	31	4	-
South Cobb High	3	305	-	-
TOTAL	847	5681	1015	1300

Community, Parents and Partnerships

CIS of Marietta/Cobb maintains partnerships with community organizations, local businesses and churches who provide basic needs items, take referrals for external services and volunteer for school-based supports. Partner organizations include, but are not limited to: Must Ministries, Young Men in Motion, Families First, Elite Women of Excellence, Boys and Girls Club, Break Through Atlanta, GA Hope and Worksource Cobb.

A total of 237 volunteer hours were logged across all Tier I supports. Mentorship groups met for 42 sessions throughout the year, connecting community members and school staff with middle and high school students. Various community partners collaborated on 59 Tier I supports across all schools.



Cobb County Sheriff's Office donating shoes to support basic needs.



Four Corners Group provides mentorship and coaching.



Walmart donating bikes for Skyhawks' Attendance Matters initiative.

Parent engagement is an integral part of student success, and the site coordinator is in an optimal position for reaching and building relationships with parents and guardians. Through family events, conferences, celebrations, basic needs assistance and workshops, **3,093** parents were either provided direct services or engaged through indirect services.

13

Home Visits

618

Parent Contacts

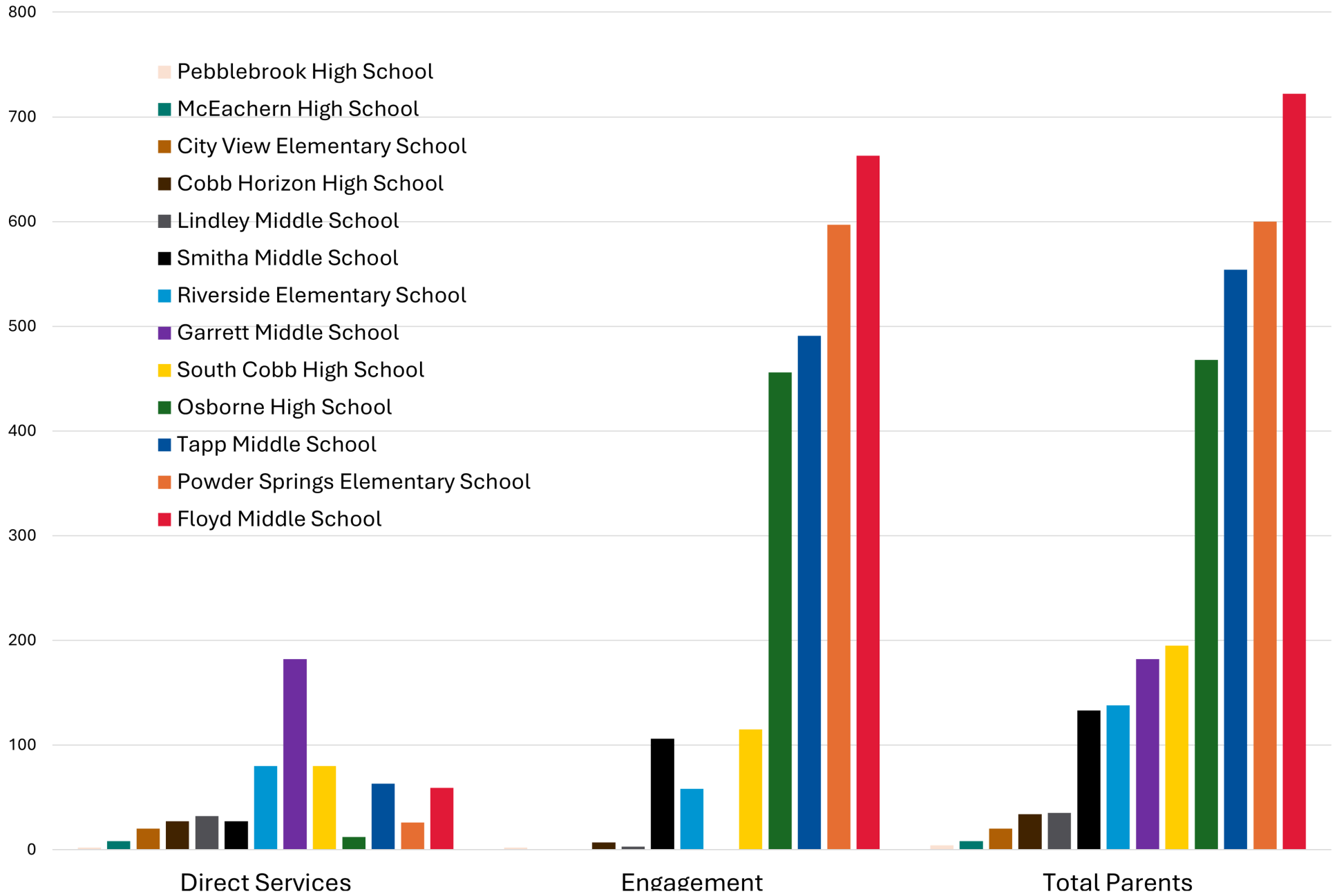
25

Family Celebrations

9

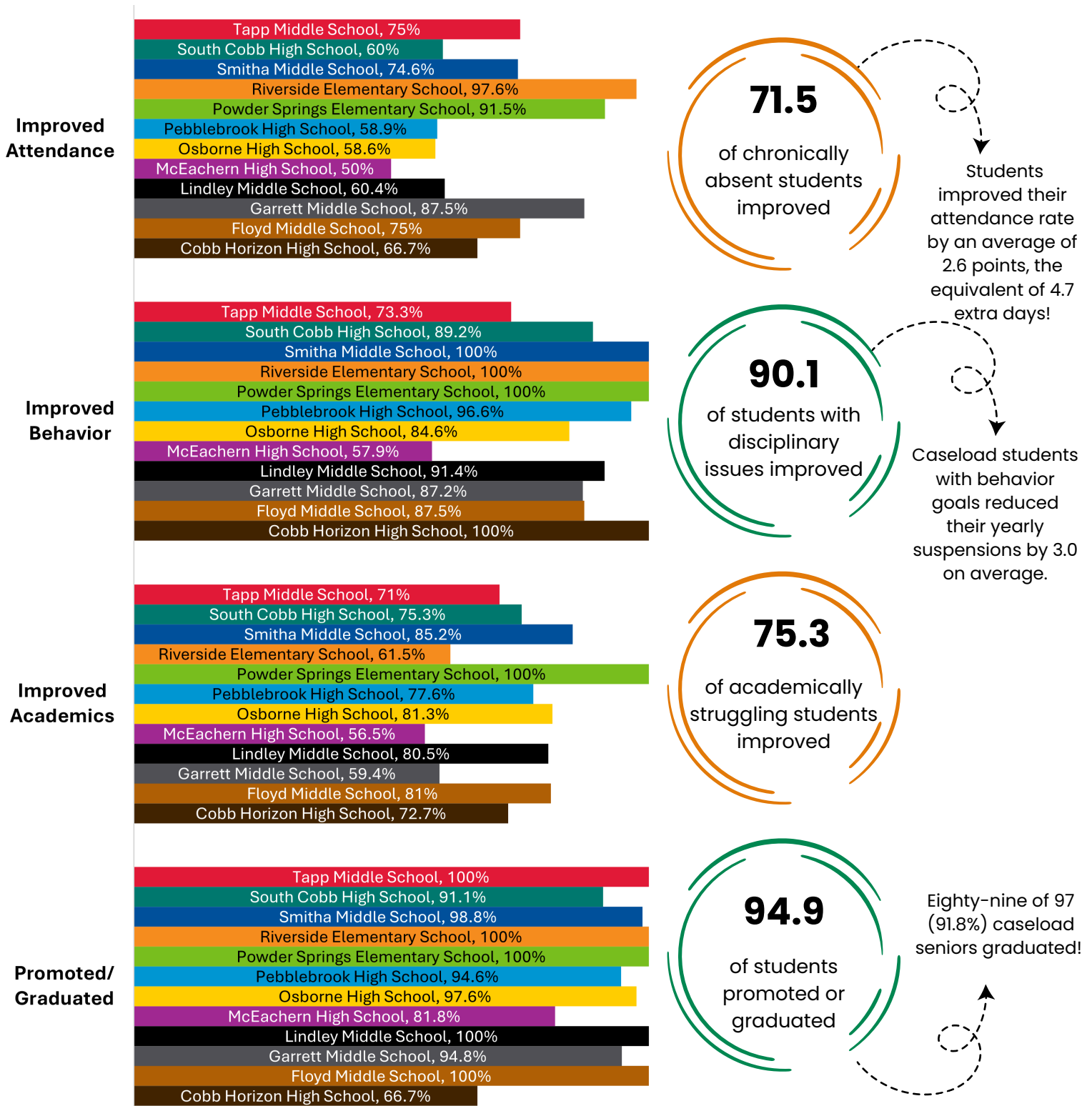
Parent Workshops

Parents Served By Support Type



Case Managed Outcomes

In developing individual student plans, CIS site coordinators assess students when they come to CIS and set performance goals. Throughout the school year, site coordinators monitor student participation in services and their progress, collecting data on student attendance, behavior, grades, and end-of-the-year status. Below are the outcomes for Cobb County case-managed students in the 2024/2025SY:



Survey Results

Principal Survey Results

In April of 2025, CIS invited administrators of sites receiving CIS services to complete an online survey via SurveyMonkey. Twelve principals from participating Cobb County schools responded and gave favorable ratings of CIS services and the site coordinator.

“ Our Site Coordinator works diligently to ensure that all barriers to learning are limited for our students. ”

“ [The Site Coordinator’s] collaboration with other professionals in the building to support student achievement is invaluable. ”

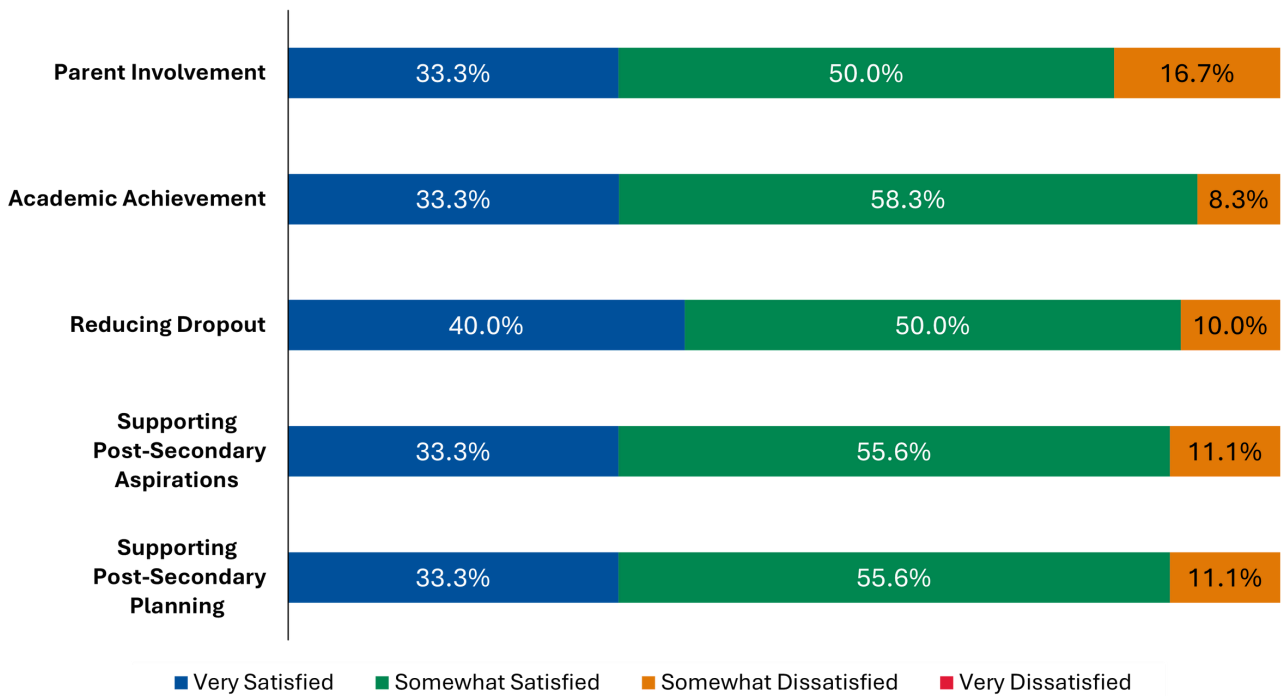
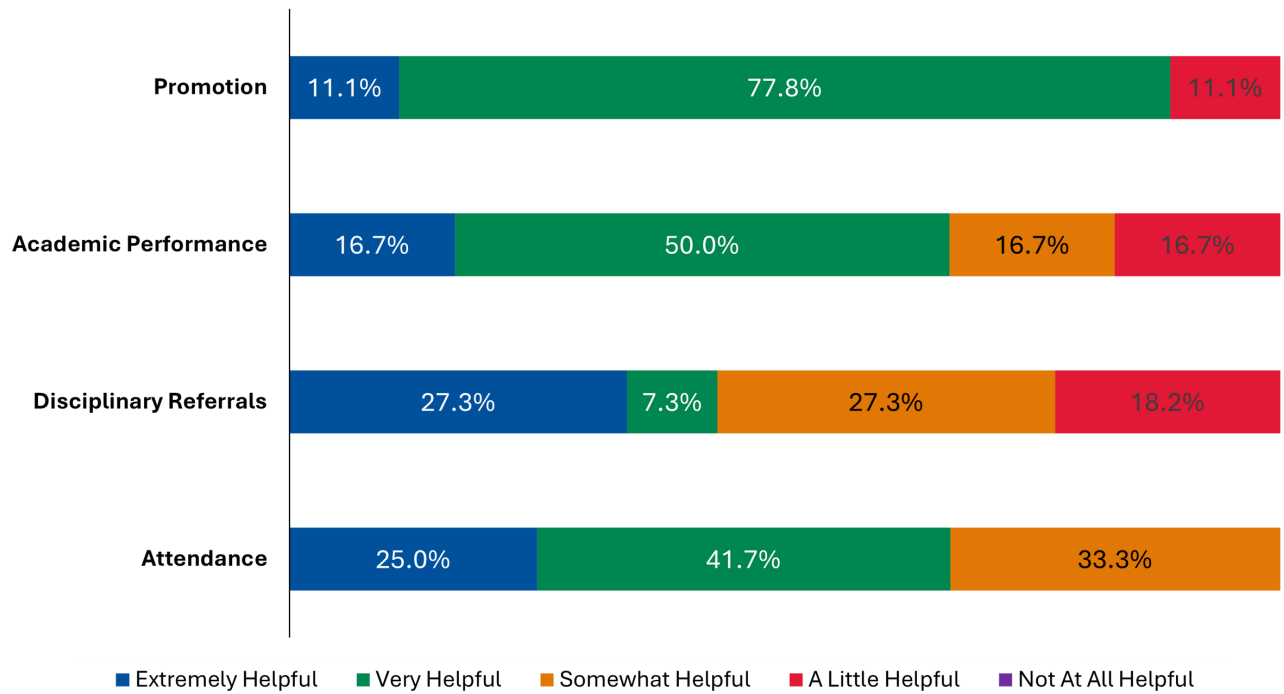
“ The community resources that have been brought in to serve our families have been valuable. In addition, the tutoring has helped out students immensely. ”

“ Chaka develops great relationships with students and families. She works hard to staff our tutoring positions and ensures students and families are receiving wrap around (whole family) supports. ”

“ Our Site Coordinator does a great job collaborating with our local community and staff. ”

“ The Site Coordinator is constantly providing programs for our students. ”

Principals were asked to rate the helpfulness of CIS services in helping student outcomes and the satisfaction of CIS' assistance in reaching school goals. Below are the results.

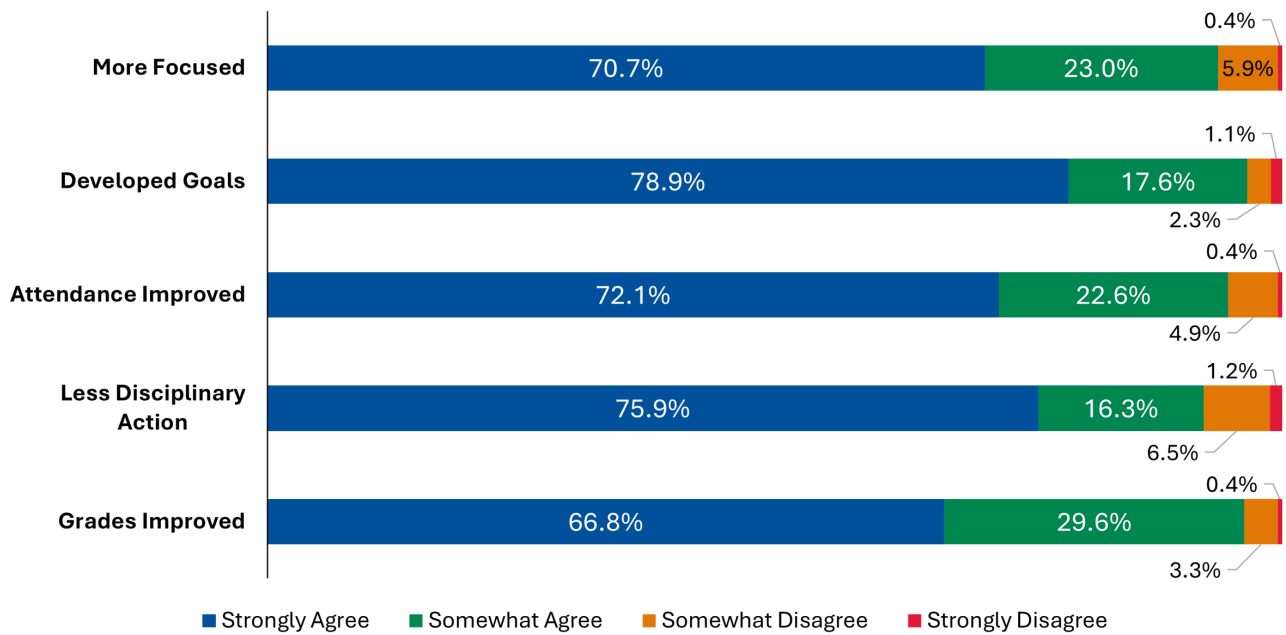


Student Survey Results

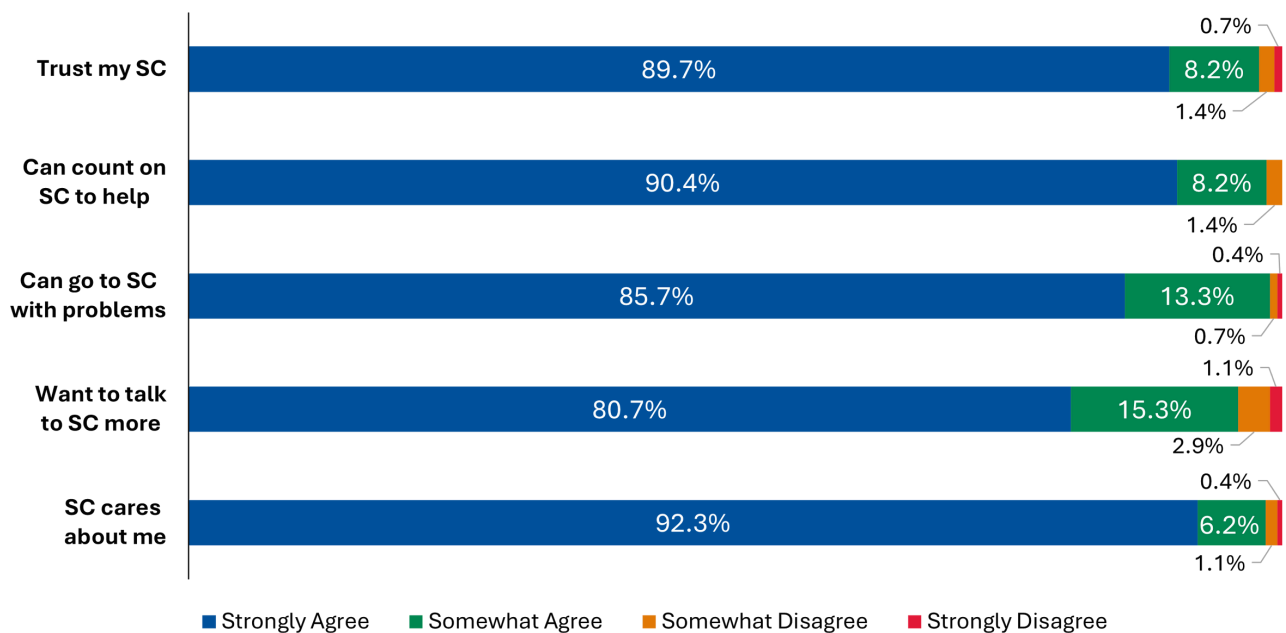
In Spring 2025, CIS of Georgia provided surveys to CIS local affiliates for case-managed students in grades 2 through 12. Surveys gauged student satisfaction with CIS services and their impressions of how CIS has influenced them and their academic performance.

Two hundred and eighty-one students from Cobb County schools participated. Student ratings were extremely positive in their perception of their site coordinator’s impact on school outcomes, their relationship with the site coordinator, and their expectations for the future.

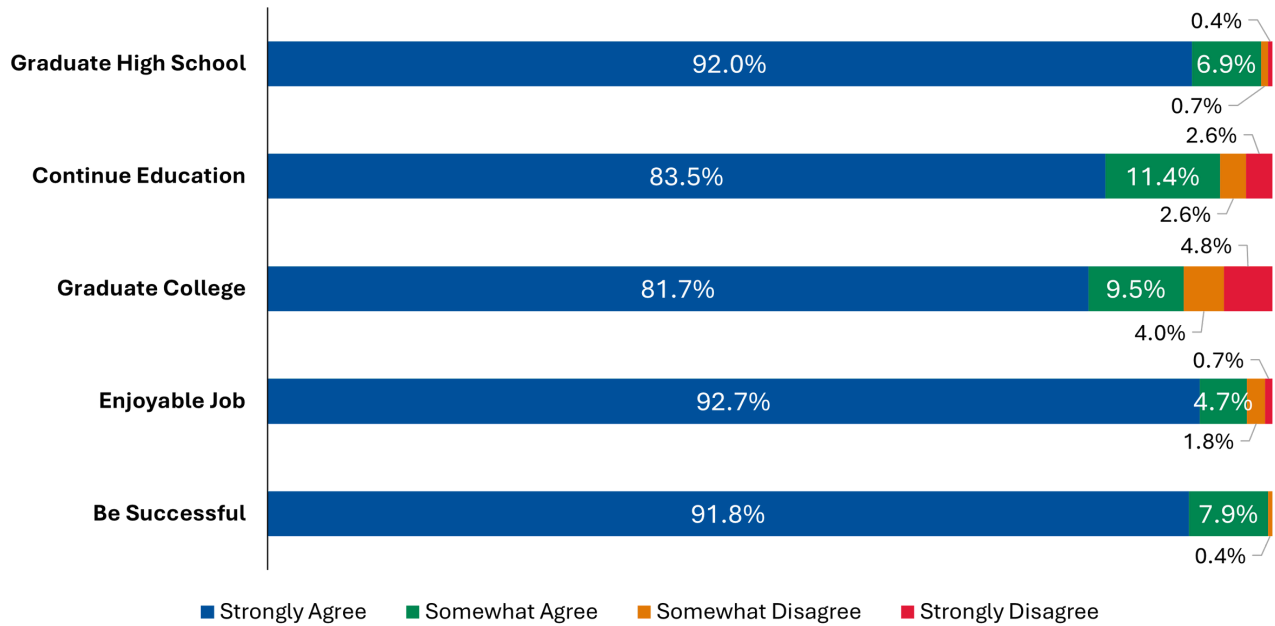
Student Perception of School Outcomes



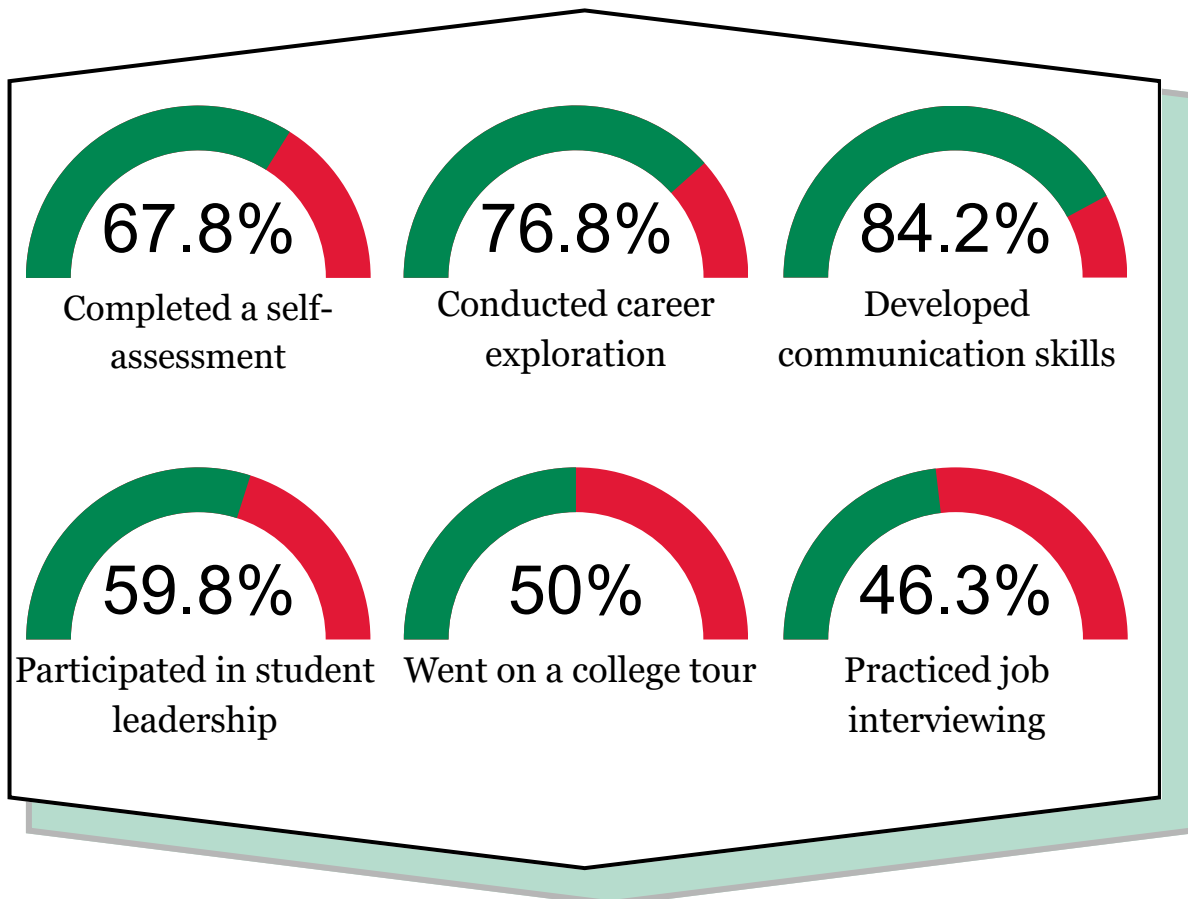
Student Relationship with Site Coordinator



Future Expectations



In addition to the satisfaction surveys, 98 Cobb County high school caseload students completed a college and career readiness survey. Students were asked to identify various skill development services and college/career-related activities they participated in while working with their site coordinators.



Student surveys indicate that CIS site coordinators have a strong rapport with their case-managed students. To students, their site coordinator is a reliable and caring adult whom they trust to help navigate any challenges. In open-ended questions, case-managed students detail the best parts of being in CIS and having a site coordinator at their school.

“ It’s good to have someone to talk to. She never says she is too busy to talk.

“ My site coordinator helped me most when I struggled with overcoming my mental struggles. She helps me understand what I can achieve in the future and how I can do it.

“ I’m learning how to be a better me. I’ve stopped getting in trouble and get good grades now.

“ She helped me most when I felt the most alone. I trusted her and I’m glad that I could go to her when I needed the help.

“ She’s helped me not self harm and love myself no matter what. She’s always there for me. I love her sooooo much!!!

“ When I am at my breaking point, she helped me with keeping my focus on my grades.

Year Over Year Data

Communities of Schools of Georgia in Marietta/Cobb County has a long-standing, established partnership with the Cobb County School District. This section displays data from the last four years. The first two tables utilize data from the Georgia Department of Education. The remaining tables address outcomes for CIS caseload students.

The first table shows the percentage of students who were chronically absent at each school from the 2022-2023 school year through last year. Twelve of the thirteen schools with CIS services have decreased the percentage of chronically absent students between 2022 and 2025. Garrett Middle School had the biggest decrease of 15.4% and McEachern High School has the smallest decrease of 2.8%. On average, schools have reduced the number of chronically absent students year-over-year. Note: City View Elementary did not have a site coordinator in 2025.

Percent of Students Chronically Absent (GaDOE Data)	2022	2023	2024	2025	Change 2022-2025
Cobb Horizon High School	37.1%	42.0%	47.6%	46.3%	9.2%
Floyd Middle School	30.9%	33.3%	30.9%	27.9%	-3.0%
Garrett Middle School	35.5%	25.0%	23.4%	20.1%	-15.4%
Lindley Middle School	44.7%	39.4%	35.5%	33.3%	-11.4%
McEachern High School	27.0%	25.2%	27.4%	24.2%	-2.8%
Osborne High School	37.1%	35.8%	33.0%	32.2%	-4.9%
Pebblebrook High School	44.7%	42.2%	38.5%	39.8%	-4.9%
Powder Springs Elementary School	23.0%	18.6%	20.7%	14.6%	-8.4%
Riverside Elementary School	39.6%	38.9%	33.7%	25.7%	-13.9%
Smitha Middle School	28.7%	25.3%	23.9%	18.6%	-10.1%
South Cobb High School	30.2%	29.4%	28.8%	25.4%	-4.8%
Tapp Middle School	23.3%	20.9%	21.5%	17.3%	-6.0%
CIS School Average	33.5%	31.3%	30.4%	27.1%	-6.4%
District Total	22.8%	19.4%	18.1%	16.1%	-7.7%
City View Elementary School	33.3%	28.7%	24.4%	21.5%	-11.8%

The second table shows the average daily attendance at each school over the same period of time. Again, 12 of the 13 school with CIS services saw an increase of the average daily attendance rate between 2022 and 2025. Garrett Middle had the biggest increase with 3% and McEachern High School the smallest increase with 0.5%. The CIS school averages are on par with the district-wide total.

Average Daily Attendance Rate (GaDOE Data)					Change
	2022	2023	2024	2025	2022-2025
Cobb Horizon High School	90.7%	90.3%	88.6%	88.4%	-2.3%
Floyd Middle School	91.4%	91.5%	91.8%	92.3%	0.9%
Garrett Middle School	90.8%	92.8%	93.4%	93.8%	3.0%
Lindley Middle School	88.6%	89.8%	91.0%	90.7%	2.1%
McEachern High School	92.4%	92.8%	92.3%	92.9%	0.5%
Osborne High School	90.4%	90.4%	91.0%	91.2%	0.8%
Pebblebrook High School	87.6%	88.4%	89.3%	89.1%	1.5%
Powder Springs Elementary School	93.1%	94.0%	93.8%	94.5%	1.4%
Riverside Elementary School	90.1%	90.6%	91.4%	92.8%	2.7%
Smitha Middle School	92.5%	92.8%	93.1%	93.8%	1.3%
South Cobb High School	91.7%	92.1%	92.0%	92.5%	0.8%
Tapp Middle School	93.4%	93.5%	93.9%	94.0%	0.6%
CIS School Average	91.1%	91.6%	91.8%	92.2%	1.1%
District Total	93.1%	93.7%	94.0%	94.3%	1.2%
City View Elementary School	92.0%	92.6%	93.3%	93.5%	1.5%

The table below shows the percentage of students on caseload who had been chronically absent the previous year and improved their attendance. Every year, the majority of Cobb County caseload students improved their attendance from the previous year. The average of all schools has steadily increased over the last three years. Garrett Middle, Cobb Horizon High and Tapp Middle had the highest increases in percentage last year.

Percent Improving Attendance of CIS Students Who Were Chronically Absent				
	2022	2023	2024	2025
City View Elementary School			75.0%	
Cobb Horizon High School	62.7%	56.8%	42.1%	66.7%
Floyd Middle School			68.0%	75.0%
Garrett Middle School	83.3%		46.7%	87.5%
Lindley Middle School			60.0%	60.4%
McEachern High School		50.0%	38.5%	50.0%
Osborne High School	100.0%	18.2%	83.3%	58.6%
Pebblebrook High School	25.0%		68.0%	58.9%
Powder Springs Elementary School		94.7%	91.1%	91.5%
Riverside Elementary School			80.0%	97.6%
Smitha Middle School			66.7%	74.6%
South Cobb High School	55.6%	56.3%	66.7%	60.0%
Tapp Middle School			53.3%	75.0%
CIS School Total	63.7%	55.6%	68.4%	71.5%

The table below shows the average number of extra days these students attended compared to the previous year, based on a 180-day school year. Eight out of twelve schools increased the number of days chronically absent students attended school on average. Riverside Elementary had the largest increase in days (12.9), and McEachern High School had the largest decrease in days (-4.2). There were overall increases in attendance for previously chronically absent students in three of the four years.

Average Change in Days of Attendance of CIS Students Who Were Chronically Absent	2022	2023	2024	2025
City View Elementary School			9.4	
Cobb Horizon High School	8.4	3.0	-10.6	8.4
Floyd Middle School			6.8	5.7
Garrett Middle School	7.5		-5.2	12.0
Lindley Middle School			-11.0	-0.5
McEachern High School		-23.2	-38.6	-4.2
Osborne High School	18.2	-3.9	9.6	-2.8
Pebblebrook High School	-25.4		4.7	2.9
Powder Springs Elementary School		10.2	11.9	7.4
Riverside Elementary School			7.7	12.9
Smitha Middle School			4.0	8.5
South Cobb High School	1.7	-3.9	2.4	-2.6
Tapp Middle School			-4.8	10.5
CIS School Total	2.1	0.0	2.1	4.7

The next table shows the percentage of caseload students with previous suspensions who reduced their number of incidents. Powder Springs Elementary’s entire caseload has reduced their behavioral incidents every year. Six out of thirteen schools have had 75% or more of their caseload reduce their suspensions for each year that data was collected. On average, all CIS schools reduced the number of suspensions for the majority of their caseload students. Last year produced the best results, with 9 in 10 students improving.

Percent Improving Suspensions of CIS Students With Previous Suspensions				
	2022	2023	2024	2025
City View Elementary School			75.0%	
Cobb Horizon High School	100.0%	100.0%	78.6%	100.0%
Floyd Middle School			62.5%	87.5%
Garrett Middle School	65.6%		48.1%	87.2%
Lindley Middle School			38.5%	91.4%
McEachern High School		N/A	75.0%	57.9%
Osborne High School	100.0%	N/A	81.5%	84.6%
Pebblebrook High School	0.0%		20.8%	96.6%
Powder Springs Elementary School		100.0%	100.0%	100.0%
Riverside Elementary School			N/A	100.0%
Smitha Middle School			93.3%	100.0%
South Cobb High School	38.5%	51.8%	71.4%	89.2%
Tapp Middle School			53.3%	73.3%
CIS School Total	63.4%	59.7%	61.8%	90.1%

The table below shows the average change in the number of suspensions for those students. Last year, Cobb Horizon High had the biggest change in number of suspensions on average and McEachern High has had the lowest. Every school has consistently reduced the number of suspension days on average.

Average Change in Number of Suspension of CIS Students With Previous Suspensions				
	2022	2023	2024	2025
City View Elementary School			-2.6	
Cobb Horizon High School	-11.8	-11.0	-2.1	-16.9
Floyd Middle School			-1.5	-3.8
Garrett Middle School	-2.9		0.0	-5.3
Lindley Middle School			0.3	-3.2
McEachern High School		N/A	-2.5	0.0
Osborne High School	-3.3	N/A	-2.5	-1.9
Pebblebrook High School			3.3	-4.3
Powder Springs Elementary School		-2.9	-1.8	-1.0
Riverside Elementary School			N/A	-1.2
Smitha Middle School			-3.5	-2.3
South Cobb High School	-12.8	-1.0	-1.9	-1.6
Tapp Middle School			-0.3	-1.1
CIS School Total	-3.8	-2.3	-0.9	-3.0

The table below shows the percentage of caseload students referred for having an average grade of C or below in the core academic classes who improved those grades. On average, about three out of four caseload students in Cobb County increased their academic average. Last year, over half (52.7%) of these students had no suspensions.

Percent Improving of CIS Students With Academic Average of C or Below Before CIS	2022	2023	2024	2025
City View Elementary School			77.8%	
Cobb Horizon High School	74.5%	85.0%	78.8%	72.7%
Floyd Middle School			76.0%	81.0%
Garrett Middle School	71.0%		76.2%	59.4%
Lindley Middle School			75.0%	80.5%
McEachern High School		0.0%	75.0%	56.5%
Osborne High School	100.0%	82.4%	64.9%	81.3%
Pebblebrook High School	63.9%		65.6%	77.6%
Powder Springs Elementary School		100.0%	53.8%	100.0%
Riverside Elementary School			79.2%	61.5%
Smitha Middle School			90.6%	85.2%
South Cobb High School	73.2%	62.2%	72.5%	75.3%
Tapp Middle School			61.9%	71.0%
CIS School Total	71.7%	71.9%	73.8%	75.3%

A Lasting Impact

In the 2024-2025 school year, Communities In Schools of Georgia served 896 students on caseload and 9,530 students through school-wide services. Site coordinators conducted incentive programs to increase overall school attendance, engaged family members through school events and provided basic needs to support student well-being. Caseload students received supports to help them increase attendance, improve their grades, enrich their school experience and improve their social skills.

Caseload students showed improvement in school outcomes. Almost all (94.9%) graduated or were promoted to the next grade. Three in four (75.3%) students improved their overall academic performance. Nine in ten (90.1%) students with prior suspensions reduced their suspensions, by an average of three incidents. Of the students referred for chronic absences, 71.5% improved their attendance.

Survey data shows that principals value the contributions of CIS and see the impact on their schools. The value their Site Coordinators for the roles they play in the school and the relationships they build with the students. Caseload students describe CIS as a judgment-free, supportive environment headed by a site coordinator who cares about their well-being.

Year-over-year data show consistent improvements in attendance, behavior and academic average of caseload students. Overall, the majority of students increased their days on roll, reduced their suspensions and increased their grades when working with a site coordinator. Communities in Schools has been a good investment for the Cobb County School District, showing consistent positive returns each year.

